

Contact Us

We welcome conversation, engagement and interaction with you on any aspect of how we are progressing the Tullaghmore project proposal. If you would like to chat about this proposed project further, please contact us via any of the below means.

To supplement this project's information process, we have compiled a dedicated online Community Consultation Exhibition. This is available at www.innovision.ie/Tullaghmore and includes much more project design detail including an interactive visual representation of how the project would look if built out from numerous vantage points surrounding the proposed projects Study Area.

Please view the projects website for continued updates on the planning applications submission

Website : www.tullaghmorewindfarm.ie

Email : tullaghmore@emp.group

Phone : 01 588 0178

Write : EMPower, 2 Dublin Landings, North Wall Quay, North Dock, Dublin 1

Public submissions and observations on any planning application under Galway County Council's care can be made:

- by post to Galway County Council, Áras an Chontae, Prospect Hill, Co. Galway
- by email to planning@galwaycoco.ie
- or by submitting observations in person at the main Galway Council Office's Planning Counter.

You will be able to access and view all the planning documentation and the Environmental Impact Assessment Report associated with this planning submission at www.tullaghmorewindfarm.ie following confirmation of receipt of the documents by Galway County Council or by contacting Galway County Council directly.

Dá mb'fhearr leat an t-eolas seo a fheiceáil i nGaeilge, déan teagmháil linn trí aon cheann de na sonraí teagmhála atá liostaithe anseo agus seolfaimid leagan Gaeilge de Nuachtlitir an tionscadail seo chugat.

Proposed Tullaghmore Wind Farm Project

Newsletter No. 5 – December 2022

Dá mb'fhearr leat an t-eolas seo a fheiceáil i nGaeilge, déan teagmháil linn trí aon cheann de na sonraí teagmhála atá liostaithe anseo agus seolfaimid leagan Gaeilge de Nuachtlitir an tionscadail seo chugat.



Looking northeast at the Tullaghmore project Study Area from near Loughaunierin along the N59

Introduction

This is the fifth Newsletter distributed for the proposed Tullaghmore wind farm project. The proposed project has now reached the point where the design team are ready to submit the projects planning application to Galway County Council. The planning submission will include the projects Environmental Impact Assessment Report and, pending final reviews, will be submitted in November/December 2022. The planning documents and the Environmental Impact Assessment Report will be accessible from the project website once they have been received by Galway County Council. This Newsletter gives an overview of the proposed project's final design prior to the proposal being submitted to Galway County Council.

To supplement the proposed project's design process, we have also compiled a dedicated online Community Consultation Exhibition. This is available at www.innovision.ie/Tullaghmore and includes added design detail on topics such as landscape and visuals, transport and delivery routes and layout maps with added functionality. There is also a very useful Photomontage viewer available in this online Community Consultation Exhibition where you will be able to see images of the proposed project as it would look if built out.

If there are any areas of the proposed project, you wish to discuss further please contact the project team using the contact details on the back page of this Newsletter or from the contact form on the project website www.tullaghmorewindfarm.ie.



The Proposed Project

A 10-year planning permission and 35-year operational life, from the date of commissioning of the entire wind farm, is being sought for the construction of 6 wind turbines, permanent met mast, on-site 38kV substation and all necessary ancillary works. The Tullaghmore wind farm project proposal includes the following:

- 6 individual wind turbines with blade tip heights of 185 meters, rotor diameters of 162 meters and hub heights of 104 meters with all associated turbine foundations and hard standing areas;
- An onsite 38kV substation along with feasibility assessment of an underground grid connection route to the existing 110kV substation in Screebe,
- Habitat and Biodiversity Enhancement measures near Maam Cross;
- Upgrading of existing site access tracks and construction of new site access tracks as required;
- 1 onsite permanent meteorological mast of 104 meters in height;
- Temporary construction compound and component delivery route from Galway Port via Spidéal and Maam Cross.
- All underground cabling required to connect the on-site substation to each wind turbine.

Project Consultation

The project team have hosted 3 separate Tullaghmore project interactive design webinars to date. These Webinars detailed different elements of the project's design process at various stages. You can view recordings of these webinars on the project website www.tullaghmorewindfarm.ie

All the previous project newsletters, communications and FAQs are available to view and download from the dedicated project's website. The projects online Community Consultation Exhibition is also accessible from the project website.

Proposed Project Schedule

Proposed Tullaghmore Schedule	2019				2020				2021				2022				2023				2024				2025				2026				2027				
	Q1	Q2	Q3	Q4	Q1	Q2	Q3	Q4	Q1	Q2	Q3	Q4	Q1	Q2	Q3	Q4	Q1	Q2	Q3	Q4	Q1	Q2	Q3	Q4	Q1	Q2	Q3	Q4	Q1	Q2	Q3	Q4	Q1	Q2	Q3	Q4	
Ornithology Studies																																					
Wind Measurement (Met Mast)																																					
Stakeholder Consultation																																					
Planning Submission & Consideration																																					
Grid Connection Application																																					
Detailed Project Design																																					
Project Construction																																					
Project Operational																																					

Note: Q1, Q2, Q3 and Q4 in the above schedule represent yearly quarters. For example, Q1 represent the first quarter of that year

Community Benefit

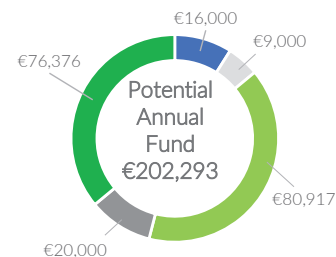
If consented the proposed Tullaghmore wind farm will require an approximate €57 million euro investment and will provide sustainable, low carbon energy generation infrastructure to meet Ireland's growing demand. The development benefits to the local community would include significant investment in local infrastructure and electrical systems, local job creation, and a contribution of approximately €11.4 million¹ in Galway County Council rates over the project's lifetime.

If consented the Tullaghmore wind farm will also provide a community fund calculated in accordance with the Renewable Electricity Support Scheme (RESS) Terms and Conditions at €2 per Mega Watt hour of electricity produced by the project. This is to be made available to the local community for the duration of the RESS (15 years). The average capacity factor of wind energy projects in Ireland is 28.3% (SEAI, 2019). Assuming this efficiency, and an estimated project capacity of 40.8 Mega Watts, the community benefit fund would amount to an average of €202,293 per annum. The actual fund will vary around this average from year to year, depending on each year's wind conditions. Wind measurements at the Study Area suggest that the proposed Tullaghmore project could be capable of achieving an above average capacity factor.

This fund is proposed to be divided as per the illustration below. An annual minimum payment of €1,000 will be provided to each household within 1 kilometer of any proposed Tullaghmore wind turbine. An annual minimum payment of €500 will be provided to each household located between 1 kilometer and 2 kilometers of any final turbine position. 40% of the fund, amounting to approximately €80,917 per year, will be allocated to not-for-profit community enterprises, with an emphasis on low-carbon initiatives. The remainder of the fund will be directed towards local clubs, societies and other initiatives.

EMPower strongly believe that the communities in which we propose our projects should benefit most from any associated fund. We welcome any suggestions from the Tullaghmore community on how this fund could best be allocated or ideas for suitable local projects that could be supported under this initiative.

Tullaghmore Indicative Community Fund Allocation



- Combined Fund for Households <1km distance
- Combined Fund for Households >1km, <2km distance
- Not-for-profit community enterprises
- Fund administration
- Local initiatives, clubs and societies

69
Direct jobs in construction phase

16
Highly skilled jobs over project lifetime

€ 57 million
Estimated Investment in Irish infrastructure

€ 3 million
Estimated Total Community Fund Contribution

€ 11.4 million¹
Approximate County Council Rates Contribution

¹ - Estimated €8,000 per mega watt installed for 35 year project lifespan

The Planning Process

The projects Environmental Impact Assessment Report (EIAR) will accompany the planning submission. All the planning documents and the EIAR will be available for public comment during the planning review process prior to Galway County Council making a judgement on the application. Sligo based Jennings O'Donovan and Co. have compiled the EIAR with input from expert specialist consultants.

Every project's EIAR is tailored to suit each project's particular aspects but the content of the Tullaghmore EIAR largely aligns with the following chapter structure:

- Chapter 1 Introduction;
- Chapter 2 Site Selection and Alternatives;
- Chapter 3 Description of Proposed Development;
- Chapter 4 Policy;
- Chapter 5 EIA Scoping, Consultation and Key Issues;
- Chapter 6 Air and Climate Change;
- Chapter 7 Noise and Vibration;
- Chapter 8 Biodiversity and Ornithology;
- Chapter 9 Land, Soils and Geology;
- Chapter 10 Hydrology and Water Quality;
- Chapter 11 Population & Human Health & Material Assets;
- Chapter 12 Shadow Flicker;
- Chapter 13 Traffic and Transportation;
- Chapter 14 Archaeology, Architectural and Cultural Heritage;
- Chapter 15 Landscape and Visual Impact;
- Chapter 16 Telecommunications and Aviation;
- Chapter 17 Interactions of the Foregoing.



Typical upland Irish wind farm, Co. Cork

During the project design and environmental assessment, consultation was carried out with Galway County Council along with a number of other statutory consultees, to discuss the project proposal. The planning application will be supported by the above-mentioned Environmental Impact Assessment Report (EIAR) and a Natura Impact Statement (NIS).

Engagement with local residents and interested stakeholders will continue after the project is submitted to Galway County Council. Our dedicated online Community Consultation Exhibition, available at www.innovision.ie/Tullaghmore, and our dedicated project website will also be continuously updated with relevant project information.

The project is ready to be submitted to Galway County Council for assessment. It is anticipated that the planning application will be submitted in Nov/Dec 2022.

The Tullaghmore wind farm planning application will include the following:

- Cover Letter to Galway County Council;
- Planning Application Form;
- Letter(s) of Consent;
- Site Notice;
- Newspaper Notices;
- Pre-Application Consultation;
- Planning drawings and drawing schedule;
- EIA Portal Confirmation Notice;
- Natura Impact Statement.



Proposed Tullaghmore Wind Farm from N59

Notification of the intention to submit a planning application supported by an EIAR will also be sent to the Department of Housing, Planning and Local Government's EIAR portal and the confirmation will be included with the planning submission. All documents and drawings will be available for public viewing from the project website www.tullaghmorewindfarm.ie.

There will also be access to the submitted Tullaghmore planning documents from Galway County Council's own planning portal and you will find details on how to access this by following the below website link, www.galway.ie/en/services/planning/process/intro.

Public submissions and observations on any planning application under Galway County Council's care can be made in writing and submitted by email to planning@galwaycoco.ie, by post to Galway County Council, Áras an Chontae, Prospect Hill, Co. Galway or by submitting observations at the main Council Office's Planning Counter.

Who Are EMPower.

EMPower is an Irish renewable energy developer with over 800 MW in development in Europe and Africa. Our senior management team comprises five Irish professionals with a combined 95 years' experience delivering projects from conception to operation across five continents. EMPower's headquarters is in Dublin. EMPower is owned by GGE Ireland Limited, Wind Power Invest A/S and EMP Holdings Limited. Our vision is to provide low carbon, ecologically non-invasive, affordable energy to facilitate Ireland's expanding economy and sustainable energy targets.

Our Commitment

Our commitment is to engage meaningfully with our project stakeholders on decisions that concern them. We aim to do this in a timely manner, and we commit to building relationships and conversing on what aspects of this proposed Tullaghmore renewable energy project could work best for this local area. We feel that designing any proposed project in this manner makes better social and business sense.



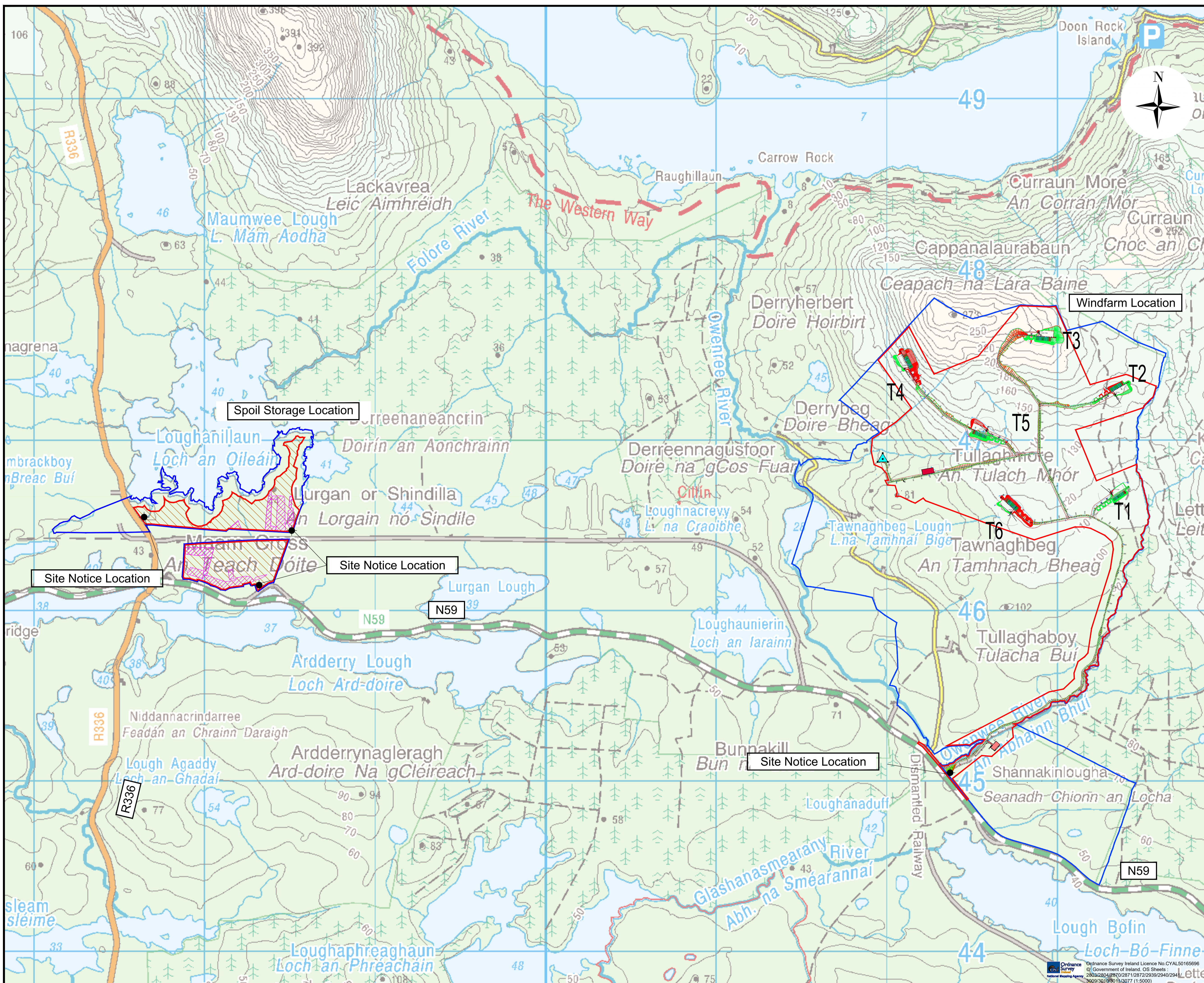
Photomontage view looking east at the proposed Tullaghmore project from Carrowgarraff. Viewing distance is approximately 5.5 kilometres.



Photomontage view looking north at the proposed Tullaghmore project from the N59 at Derryerglinna. The viewing distance is approximately 3.2 kilometres.



Photomontage view looking northeast at the proposed Tullaghmore project from the local road L35266 at Tawnaghbeg/Tullaghmore. The viewing distance is approximately 850 metres.



NOTES
 1. FIGURED DIMENSIONS ONLY TO BE TAKEN FROM THIS DRAWING.
 2. ALL DRAWINGS TO BE CHECKED BY THE CONTRACTOR ON SITE.
 3. ENGINEER TO BE INFORMED OF ANY DISCREPANCIES BEFORE ANY WORK COMMENCES.
 4. THIS DRAWING TO BE READ IN CONJUNCTION WITH ALL OTHER RELEVANT DRAWINGS AND SPECIFICATIONS.

- Legend**
- Planning Application Boundary
 - Lands Under Control of Applicant
 - Proposed Wind Turbine
 - Proposed Crane Hardstand
 - Proposed Spoil Storage Locations
 - Habitat Enhancement Lands
 - Proposed Meteorological Mast
 - Proposed Substation Location
 - Proposed Temporary Compound Location
 - Proposed Fill
 - Proposed Cut

Ordnance Survey Ireland Licence No. CYAL50165696
 © Government of Ireland, OS Sheets:
 2803/2804/2870/2871/2872/2939/2940/2941/
 3009/3010/3011/3077 (1:5000)

rev.	modifications	by	date

Client
 Tullaghmore Wind Farm Limited

Project
 Proposed Tullaghmore Wind Farm, County Galway.

Stage
 Planning

Title
 Overall Site Location Discovery Map

Scales
 1:10,000 (A1) & 1:20,000 (A3)

Surveyed	Prepared By	Checked	Date
	L.B.	A.O.G	Oct. 2022

© COPYRIGHT OF
 JENNINGS O'DONOVAN & PARTNERS LIMITED,
 CONSULTING ENGINEERS,
 FINISKLIN,
 SLIGO,
 IRELAND.
 TEL. (0035371) 9161416.
 FAX. (0035371) 9161080.
 Email. info@jodireland.com
 Web. www.jodireland.com



Job No.	Drawing no.	Revision
6276	6276-TFW-JOD-XX-DR-C-0100	P00